



**2020 CMOM PACKAGE 2B PROJECT
Solicitation No. CO-00519
Job No. 21-4511**

**ADDENDUM NO. 1
September 29, 2022**

To Bidder of Record:

This addendum, applicable to work referenced above, is an amendment to the bid proposal, plans and specifications and as such will be a part of and included in the Contract Documents. Acknowledge receipt of this addendum by entering the Addendum number and issue date on the space provided in submitted copies of the bid proposal.

RESPONSES TO QUESTIONS

1. Question: Does the internal bead of the fused HDPE pipe need to be removed after fusing?

Response: A mandrel test is required on all open cut and bore sites per Specification 849, and the internal beading associated with the fused HDPE pipe (site C-26) shall be removed as necessary to perform the test.

CHANGES TO THE SPECIFICATIONS

1. Remove the first paragraph of the Invitation to Bidders and replace it with the following:

Sealed bids are requested by the San Antonio Water System for the installation of approximately 2,556 LF of 8" – 18" sanitary sewer mains via open cut method, approximately 940 LF of 12" – 18" sanitary sewer mains via boring method, approximately 386 LF of 18" HDPE sanitary sewer main via trenchless guided boring, grouting/abandonment of approximately 2,887 LF of 8" - 15" sanitary sewer mains, including associated manhole improvements and replacement, adjustment of three water mains due to conflicts with sanitary sewer installation, bypass pumping, and traffic control for the 2020 CMOM Package 2B Project, SAWS Job No. 21-4511.

2. Add Specification Item 840 Water Tie-Ins to the "Special Provisions to the Technical Specifications" section of the contract documents, see attached.

CHANGES TO THE PLANS

1. Replace sheet 5 with attached sheet. Revised sheet includes corrected TxDOT ROW limits to Site 6 - Plan and Profile.

**2. Replace sheet 8 with attached sheet. The following note to Site 09 - Plan and Profile was added:
"9. Installation of the 52 LF of steel casing and carrier pipe is inclusive for item 856."**

END OF ADDENDUM

This Addendum, including these two (2) pages, is eight (8) pages with attachments in its entirety.

Attachments:

1. **Specification Item 840 – Water Tie-ins (4 pages)**
2. **Sheet 5: Site 6 – Plan & Profile (1 page)**
3. **Sheet 8: Site 9 – Plan & Profile (1 page)**



Carl Bain, PE
Bain Medina Bain, Inc.



San Antonio Water System Standard Specifications for Construction

ITEM NO. 840

Water Tie-Ins

840.1 DESCRIPTION: This item shall consist of water main tie-ins installed in accordance with these specifications and as directed by the Engineer. A Water Tie-In is defined as a connection between a new main and an existing main that is no longer than one joint of pipe.

840.2 REFERENCED STANDARDS: Reference standards cited in this Specification Item No. 840 refer to the current reference standard published at the time of the latest revision date.

1. San Antonio Water System (SAWS):
 - a. Specifications for Water and Sanitary Sewer Construction
 - b. SAWS Materials Specifications
2. City of San Antonio (COSA) Specifications for Construction
3. Texas Commission on Environmental Quality (TCEQ)
 - a. Chapter 290; Subchapter D – Rules and Regulations for Public Drinking Water
4. American National Standards Institute (ANSI)
 - a. ANSI A 21.11/AWWA C111 - Standard for Rubber-Gasket Joints for Ductile-Iron Pressure Pipe and Fittings.
 - b. ANSI/NSF Standard 61 - Drinking Water System - Health Components.
5. American Society for Testing and Materials (ASTM) International:
Pressure Pipe and Fittings.
 - a. ASTM A 36 - Standard Specification for Carbon Structural Steel.
 - b. ASTM A 536 - Standard Specification for Ductile Iron Castings.
 - c. ASTM A 126 - Standard Specification for Gray Iron Castings for Valves, Flanges, and Pipe Fittings.
 - d. ASTM B 21 - Standard Specification for Naval Brass Rod, Bar, and Shapes.
 - e. ASTM B 98 - Standard Specification for Copper-Silicon Alloy Rod, Bar, and Shapes.
 - f. ASTM B 301 - Standard Specification for Free-Cutting Copper Rod and Bar.
 - g. ASTM B 584 - Standard Specification for Copper Alloy Sand Casting for General Application.
 - h. ASTM E 165 - Standard Test Method for Liquid Penetrant Examination.
 - i. ASTM E 709 - Standard Guide for Magnetic Particle Examination.
 - j. ASTM F 1674 - Standard Test Method for Joint Restraint Products for Use with PVC Pipe.

San Antonio Water System Standard Specifications for Construction

6. American Water Works Association (AWWA)
 - a. AWWA C 206 - Standard for Field Welding of Steel Water Pipe.
 - b. AWWA C 207 - Standard for Steel Pipe Flanges for Waterworks Service - Sizes 4 Inches through 144 Inches.
 - c. AWWA C 800 - Standard for Underground Service Line Valves and Fittings.
7. Occupational Safety and Health Administration (OSHA)
 - a. OSHA 29 CFR 1926.1101 – Asbestos.

840.3 SUBMITTALS: Contractor shall submit manufacturer's product data, instructions, recommendations, shop drawings, and certifications. All submittals shall be in accordance with Engineer's requirements and submittals shall be approved prior to delivery.

840.4 MATERIALS: The materials for water main tie-ins shall conform to the specifications contained within the latest revision of SAWS' Material Specifications for all appropriate items.

840.5 CONSTRUCTION: The Contractor shall make tie-ins from new water mains to existing water mains as shown in the contract documents or as directed by the Engineer.

1. The Contractor shall be responsible for all shutdowns and isolation of the existing mains; cutting pipe for the connection; dewatering the excavation; a d v a n c e d customer notification of the shutdown; and all other requirements as directed and coordinated through the SAWS Inspector to provide completion of this effort in a safe and secure manner.
2. The opening or closing of SAWS valves smaller than 12-inches can only be performed in the presence of the SAWS Inspector.
3. The opening or closing of SAWS valves 12-inches and larger, and any valves identified as critical (e.g., division valves) can only be operated by SAWS Distribution and Collection Department.
4. The planned shutdown, tie-in work and hours shall be coordinated through and approved by the SAWS Inspector. The Contractor is required to provide written notification to the SAWS Inspector at least twenty-five (25) Calendar Days in advance of the anticipated tie-in date for customer coordination and test shutdowns. The shutdowns shall be accomplished at a time that results in the least inconvenience to SAWS customers, including overnight shutdowns at no additional cost to SAWS. The twenty-five (25) Calendar Day notification is required for all shutdowns to account for cases where the shutdown affects a significant number of SAWS customers, critical services, or when an extended shutdown duration will negatively impact customers. The twenty-five (25) Calendar Day period begins at written notification to the SAWS Inspector and ends at initiation of the tie-in work. This will allow SAWS time to review shut-down options, coordinate with affected customers and engage with the public. Contractor should plan for the twenty-five (25) Calendar

San Antonio Water System Standard Specifications for Construction

- Days in their project schedule and bid for every shutdown.
5. A temporary water main, defined as a 4-inch main or greater, may be required to maintain customer services during the shutdown. SAWS approval will be required for the addition of a temporary water main. If approved by SAWS and there is no existing line item a separate temporary water main bid item will be established and negotiated for payment.
 6. A cut-in valve may be required to facilitate the shutdown. If approved by SAWS and there is no existing line item a separate cut-in valve bid item will be established and negotiated for payment.
 7. Tapping of CSC pipe is only allowed by the CSC Manufacturer of pipe brand being tapped or CSC Manufacturer approved by SAWS. See specification Item No. 820 Concrete Steel Cylinder Pipe Installation.
 8. No additional compensation will be provided for tie-ins, and any related costs, accomplished outside of normal working hours.
 9. Prior to installation of tie-ins, all materials and equipment to complete tie in work shall be on-site and verified by the inspector prior to beginning any associated work.
 10. If System allows, multiple tie-ins must be coordinated and approved in advance with SAWS' Inspector, but multiple tie ins may not be guaranteed.
 11. Contractor to be prepared for water main shutdown as coordinated with SAWS Inspector. Fines may be assessed if Contractor cancels or delays owner.
 12. Contractor to consider dewatering of the main as part of the duration of tie-in work.
 13. SAWS cannot guarantee a complete water shutdown, Contractor is responsible for providing adequate dewatering efforts to complete tie-in work
 14. Contractor is responsible for providing temporary water connections to critical services that are required to stay in service during the tie-in or where a tie-in duration will affect a critical services normal operation. Advanced coordination with inspections will be required to identify critical services that could be impacted by the shutdown.
 15. All tie-ins must be restrained in accordance with Specification Item No. 839,

"Anchorage/Thrust Blocking And Joint Restraint."

840.6 MEASUREMENT: Tie-ins will be measured by the unit of each such assembly of the various sizes of tie-ins installed at the proposed mains to be accepted.

840.7 PAYMENT: Payment for "Tie-ins" will be made at the unit price bid for each tie-in of the various types and sizes completed from an existing main to the proposed main to be accepted.

1. Such payment shall include; shut-down and isolation of the existing main to which the new main is to be connected, cutting pipe for the connection, dewatering the excavation, assembly, excavation, selected embedment material, initial backfill, secondary backfill, anti-corrosion embedment when specified, compaction, compaction testing, blocking, transition coupling, all required restraints, accessories and appurtenances, hauling and disposition of surplus

San Antonio Water System Standard Specifications for Construction

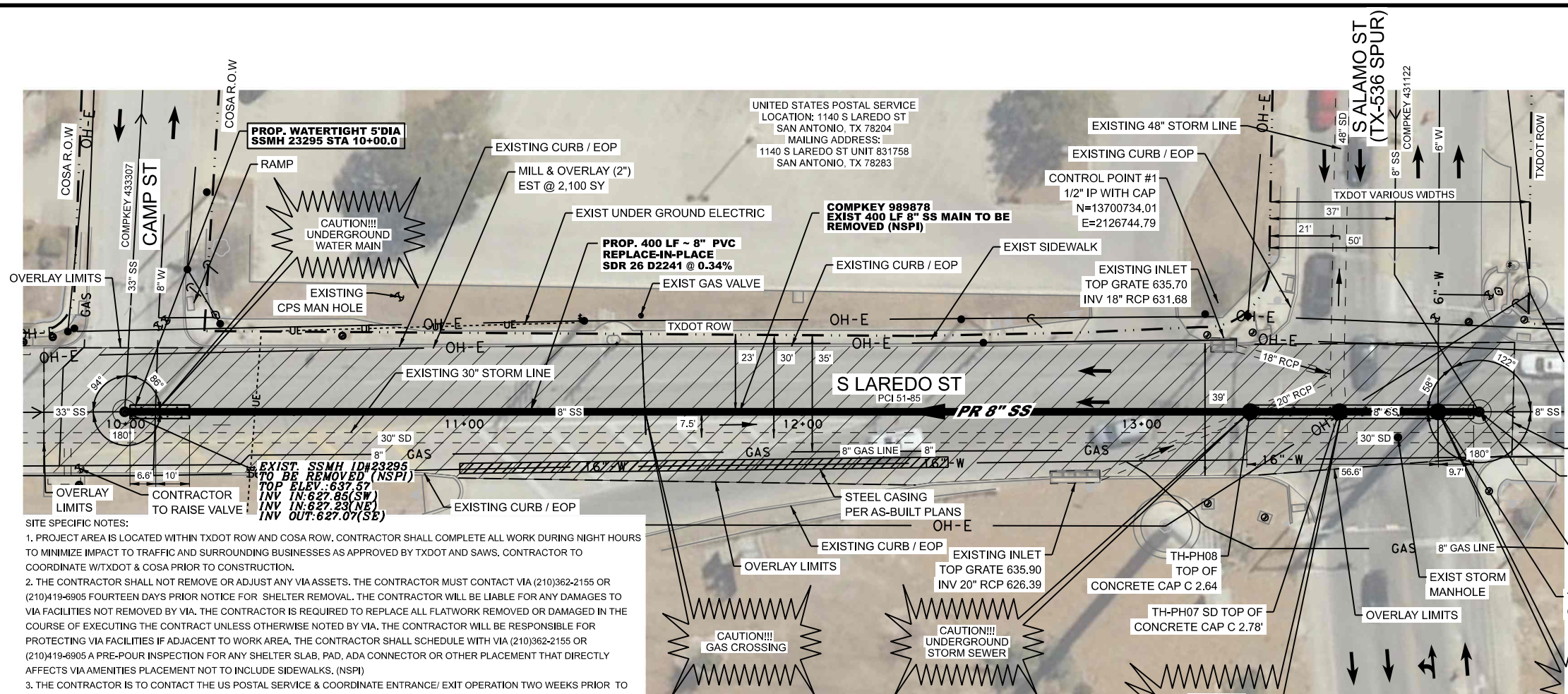
excavated material, including all existing pipe, fittings, appurtenances to be abandoned or removed, surface and pavement restoration, installation of all-weather surface, dewatering of the main, other required testing, temporary service connections, customer coordination and customer notification of service interruption where required.

2. Connections between new and existing mains which are made with cut-in tees and tapping sleeves and valves will be processed as separate pay items in accordance with SAWS specification Item No. 831 and Item No. 832, respectively.
3. Temporary water mains (4" or greater) will be processed as a separate pay item.
4. Cut-in valves will be processed as a separate pay item.
5. Removal and handling of asbestos cement pipe required for tie-ins will be processed as a separate pay item in accordance with SAWS specification Item No. 3000.
6. Materials paid on site will be in accordance with Table 1 of Specification Item No. 100 Mobilization.

-End of Specification-

SCALE \$

SCALE \$



SEWER LINE "SITE 6"
PROPOSED 8" MAIN (COMPKEY 989878)
STA 10+00 TO STA 14+00

- SITE SPECIFIC NOTES:**
1. PROJECT AREA IS LOCATED WITHIN TXDOT ROW AND COSA ROW. CONTRACTOR SHALL COMPLETE ALL WORK DURING NIGHT HOURS TO MINIMIZE IMPACT TO TRAFFIC AND SURROUNDING BUSINESSES AS APPROVED BY TXDOT AND SAWS. CONTRACTOR TO COORDINATE WITH TXDOT & COSA PRIOR TO CONSTRUCTION.
 2. THE CONTRACTOR SHALL NOT REMOVE OR ADJUST ANY VIA ASSETS. THE CONTRACTOR MUST CONTACT VIA (210)362-2155 OR (210)419-6905 FOURTEEN DAYS PRIOR NOTICE FOR SHELTER REMOVAL. THE CONTRACTOR WILL BE LIABLE FOR ANY DAMAGES TO VIA FACILITIES NOT REMOVED BY VIA. THE CONTRACTOR IS REQUIRED TO REPLACE ALL FLATWORK REMOVED OR DAMAGED IN THE COURSE OF EXECUTING THE CONTRACT UNLESS OTHERWISE NOTED BY VIA. THE CONTRACTOR WILL BE RESPONSIBLE FOR PROTECTING VIA FACILITIES IF ADJACENT TO WORK AREA. THE CONTRACTOR SHALL SCHEDULE WITH VIA (210)362-2155 OR (210)419-6905 A PRE-POUR INSPECTION FOR ANY SHELTER SLAB, PAD, ADA CONNECTOR OR OTHER PLACEMENT THAT DIRECTLY AFFECTS VIA AMENITIES PLACEMENT NOT TO INCLUDE SIDEWALKS. (NSPI)
 3. THE CONTRACTOR IS TO CONTACT THE US POSTAL SERVICE & COORDINATE ENTRANCE/ EXIT OPERATION TWO WEEKS PRIOR TO CONSTRUCTION ACTIVITIES.
 4. SEE SHEET 2, NOTE # 28 FOR INFORMATION REGARDING SMART MANHOLE COVERS.
 5. CONTRACTORS TO RESTRIPE AREAS AFFECTED BY CONSTRUCTION OPERATIONS.
 6. THIS SITE REQUIRES A FLOOD PLAIN DEVELOPMENT PERMIT (F.P.D.P) WHICH WILL BE OBTAINED BY SAWS.
 7. CONTRACTOR IS RESPONSIBLE TO COMPLETE EXPLORATORY WORK AND COORDINATE WITH SAWS INSPECTOR AND ENGINEER PRIOR TO CONSTRUCTION ACTIVITIES (NSPI).

ITEM	DESCRIPTION	UNIT	QUANT.
305	Salv. Haul & Skipl Rd Asph Pmnt (0 to 4") (TxDOT Spec)	SY	2100
340	DR GR HMA(SD) TY D PG70-22 (2") (TxDOT Spec)	TON	285
341	Tack Coat (TxDOT Spec)	GA	210
401	Flowable Backfill (TxDOT Spec)	CY	298
530	Off-Duty Police Officer (CoSA Spec)	HR	240
530.1	Barricades, Signs, and Traffic Handling (Site 06) (CoSA Spec)	EA	1
550	Trench Excavation Safety Protection	LF	420
666	REFL PAV MRK TY I (W)4"(SLD)(100MIL) (TxDOT Spec)	LF	100
666	REFL PAV MRK TY I (W)24"(SLD)(100MIL) (TxDOT Spec)	LF	300
666	REFL PAV MRK TY I (Y)4"(SLD)(100MIL) (TxDOT Spec)	LF	200
666	REFL PAV MRK TY I (Y)24"(SLD)(100MIL) (TxDOT Spec)	LF	200
666	PAVEMENT SEALER 4" (TxDOT Spec)	LF	300
666	PAVEMENT SEALER 24" (TxDOT Spec)	LF	500
672	REFL PAV MRKR TY I-C (TxDOT Spec)	EA	15
672	REFL PAV MRKR TY II-A-A (TxDOT Spec)	EA	10
818	Water Pipe Installation 6" PVC (C-900 and C909)	LF	20
826	Existing Valve Box Adjustments	EA	2
836	Grey Iron and Ductile-Iron Fittings	TON	1
840	6" Water tie-ins	EA	2
841	Hydrostatic Testing	EA	1
844	2" Blowoff, Temporary	EA	2
848	8" PVC Sanitary Sewer Line (Depth 6'-10')	LF	400
852	Sanitary Sewer Manhole (0' - 6') 4' Dia	EA	2
852	Sanitary Sewer Manhole (0' - 6') 5' Dia	EA	1
852	Extra Depth Manholes (> 6'), 4' Dia	VF	1
852	Extra Depth Manholes (> 6'), 5' Dia	VF	5
864-S2	Bypass Pumping (Site 06)	EA	1
865	Bypass Pumping (Site 06)	EA	1
866	Sewer Main Pre-Television Inspection (8" - 15")	LF	400
866	Sewer Main Post-Television Inspection (All Sizes)	LF	400
SS 6001	Portable Changeable Message Sign (TxDOT Spec)	EA	3
100	Mobilization (Site 06)	LS	1
101	Preparation of Right-of-Way (Site 06)	LS	1
SS 9003	Exploratory Work	ALW	1
401	Storm Drain Repair (All Sizes) (CoSA Spec)	ALW	1
SP 866	Storm Sewer Televising (All sizes)	ALW	1

REV. No.	DATE	DESCRIPTION	BY
1	09-28-2022	ADDENDUM #1	A.H.

EXIST. SSMH ID#22251 TO BE REMOVED (NSPI)
 TOP ELEV.: 636.20
 INV IN: 629.53 (SE)
 INV IN: 629.29 (SW)
 INV OUT: 629.21 (NE)

PROP. WATERTIGHT 4" DIA SSMH 22251 STA 14+00.0
 TH-PH06 SAWS WATER TOP OF CONCRETE CAP C 3.24'

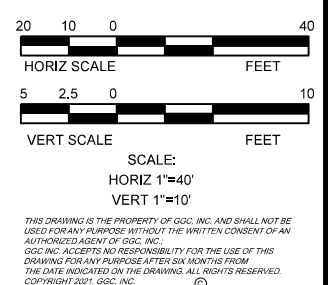
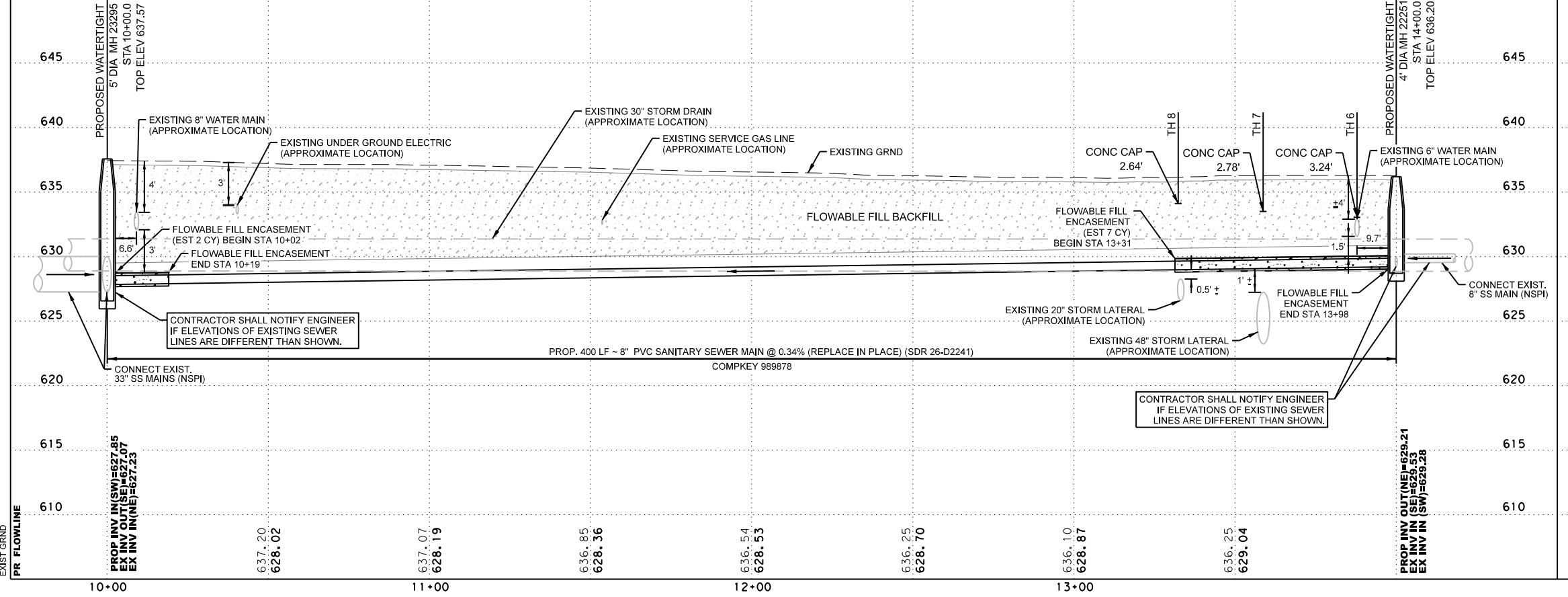
REVISED 9/21/22
 TXDOT ROW LIMITS



Abiel R. Hinojosa
 09-07-22

LEGEND

- EXISTING WATER METER
- EXISTING FIRE HYDRANT
- EXISTING POWER POLE
- EXISTING WATER VALVE
- EXISTING MAIL BOX
- EXISTING FLOW ARROW
- EXISTING STORM SEWER
- EXIST WATER MAIN
- PROP SANITARY SEWER
- PROP BY-PASS
- EXIST SANITARY SEWER
- PROPOSED SEWER MANHOLE
- EXIST SEWER MANHOLE
- PROPOSED SEWER LATERAL AND CLEAN-OUT
- GAS MAIN
- OVERHEAD ELECTRIC
- UNDERGROUND ELECTRIC
- UNDERGROUND TELEPHONE
- PROPOSED FLOW ARROWS
- TREE
- SIGN
- GUY ANCHOR
- TESTHOLE
- CONTROL POINT
- BYPASS DRIVEWAY RAMP
- FLOWABLE FILL BACKFILL
- STEEL CASING
- PAVEMENT RESTORATION
- CAUTION UTILITY CROSSING



THIS DRAWING IS THE PROPERTY OF GGC, INC. AND SHALL NOT BE USED FOR ANY PURPOSE WITHOUT THE WRITTEN CONSENT OF AN AUTHORIZED AGENT OF GGC, INC. GGC, INC. ACCEPTS NO RESPONSIBILITY FOR THE USE OF THIS DRAWING FOR ANY PURPOSE AFTER SIX MONTHS FROM THE DATE INDICATED ON THE DRAWING. ALL RIGHTS RESERVED. COPYRIGHT 2021, GGC, INC.

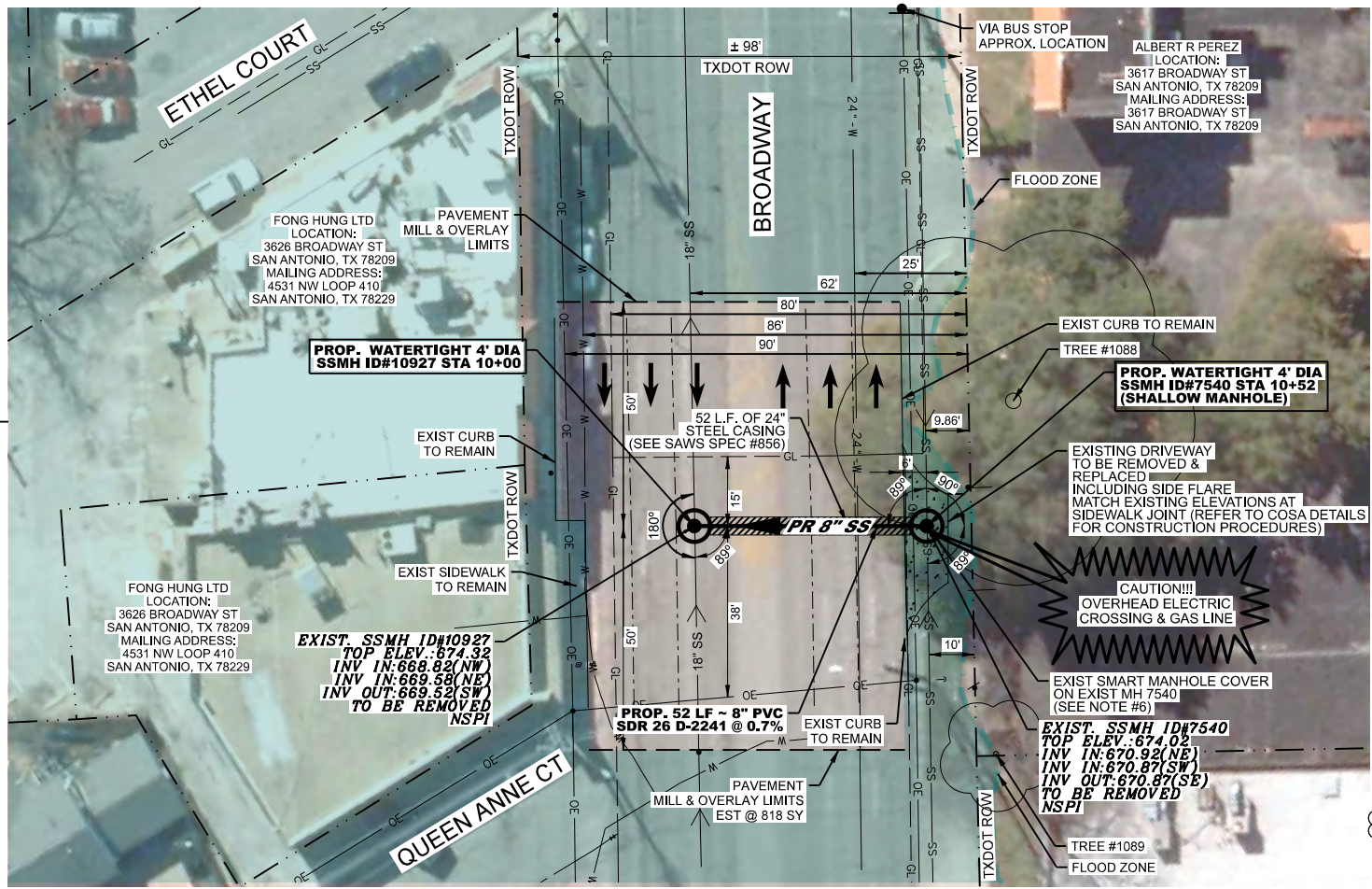
GGC Engineers, Inc.
 11215 Morning Court
 San Antonio, Texas 78213
 Ph. (210) 495-4745 Fax (210) 495-4746
 TBPE Reg. No. F-1184

BAIN MEDINA BAIN, INC.
 ENGINEERS & SURVEYORS
 TBPE F-001712
 7073 San Pedro, San Antonio, Texas, 78216
 Phone: 210-494-7223 Fax: 210-490-5120 WWW.BMBI.COM

SSORP CMOM PACKAGE 2B
PLAN & PROFILE
8" SANITARY SEWER MAIN
(SITE 6)

DEVELOPER:	BUDGET PROJ.	SHEET
CONT.		5
SUBMITTED		OF 64
APPROVED		
MAP No.		
SECT. No.	100% SUBMITTAL	
DR. MO	CK. MAM/ARH	JOB No. 21-4511

SCALE \$



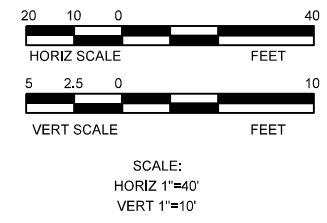
SITE SPECIFIC NOTES:

- PROJECT AREA IS LOCATED WITHIN TXDOT ROW. CONTRACTOR SHALL COMPLETE ALL WORK DURING NIGHT HOURS TO MINIMIZE IMPACT TO TRAFFIC AND SURROUNDING BUSINESSES AS APPROVED BY TXDOT AND SAWS. CONTRACTOR TO COORDINATE WITH TXDOT & COSA PRIOR TO CONSTRUCTION.
- THIS SITE REQUIRES A FLOOD PLAIN DEVELOPMENT PERMIT (FPDP). SAWS TO OBTAIN A FPDP.
- THE CONTRACTOR SHALL NOT REMOVE OR ADJUST ANY VIA ASSETS. THE CONTRACTOR MUST CONTACT VIA (210)362-2155 OR (210)419-6905 FOURTEEN DAYS PRIOR NOTICE FOR SHELTER REMOVAL. THE CONTRACTOR WILL BE LIABLE FOR ANY DAMAGES TO VIA FACILITIES NOT REMOVED BY VIA. THE CONTRACTOR IS REQUIRED TO REPLACE ALL FLATWORK REMOVED OR DAMAGED IN THE COURSE OF EXECUTING THE CONTRACT UNLESS OTHERWISE NOTED BY VIA. THE CONTRACTOR WILL BE RESPONSIBLE FOR PROTECTING VIA FACILITIES IF ADJACENT TO WORK AREA. THE CONTRACTOR SHALL SCHEDULE WITH VIA (210)362-2155 OR (210)419-6905 A PRE-POUR INSPECTION FOR ANY SHELTER SLAB, PAD, ADA CONNECTOR OR OTHER PLACEMENT THAT DIRECTLY AFFECTS VIA AMENITIES PLACEMENT NOT TO INCLUDE SIDEWALKS. (NSPI)
- THE CONTRACTOR IS TO CONTACT THE BUSINESS OWNERS WITHIN THE SHOPPING PLAZA & COORDINATE ENTRANCE/EXIT OPERATION TWO WEEKS PRIOR TO CONSTRUCTION ACTIVITIES.
OWNER/POC: ALBERT R. PEREZ ADDRESS 3617 BROADWAY ST, SAN ANTONIO, TX 78209 210-826-4925
- THE CONTRACTOR IS TO CONTACT THE WITTE MUSEUM TWO WEEKS PRIOR TO CONSTRUCTION ACTIVITIES.
BRADY HAYNES BRADY.HAYNES@WITTEMUSEUM.ORG
- SEE SHEET 2, NOTE #28 FOR INFORMATION REGARDING SMART MANHOLE COVERS.
- THE CONTRACTOR IS TO SCHEDULE CONSTRUCTION OPERATIONS OUTSIDE PEAK TRAFFIC DAYS SUCH AS EASTER, SPRING BREAK, AND FIESTA. THE CONTRACTOR IS TO COORDINATE WITH SAWS AND COSA FOR ADDITIONAL INFORMATION.
- CONTRACTOR IS TO VERIFY ELEVATIONS OF WATER MAIN & GAS MAINS PRIOR TO WORK COMMENCEMENT. CONTACT ENGINEER IF ELEVATION IS DIFFERENT THAN SHOWN.
- INSTALLATION OF THE 52 LF OF STEEL CASING AND CARRIER PIPE IS INCLUSIVE FOR ITEM 856.

ITEM	DESCRIPTION	UNIT	QUANT.
104	Removing Concrete (Driveways) (TxDOT Spec)	SY	43
305	Salv. Haul & Skid Rcl Asp Phvmt (0 to 4") (TxDOT Spec)	TON	850
340	D-GR HMA(S) TY PG70-22 (2") (TxDOT Spec)	TON	187
341	Track Coat (TxDOT Spec)	CY	85
401	Flowable Backfill (TxDOT Spec)	CY	22
530	Driveways (Concrete) (TxDOT Spec)	SY	43
530.1	Barricades, Signs, and Traffic Handling (Site 09) (CoSA Spec)	EA	1
550	Trench Excavation Safety Protection	LF	52
666	REFL PAV MRK TY I (W)4"(SLD)(100MIL) (TxDOT Spec)	LF	80
666	REFL PAV MRK TY I (W)24"(SLD)(100MIL) (TxDOT Spec)	LF	30
666	REFL PAV MRK TY I (Y)4"(SLD)(100MIL) (TxDOT Spec)	LF	200
666	REFL PAV MRK TY I (Y)MED NOSE(100MIL) (TxDOT Spec)	EA	1
666	PAVEMENT SEALER 4" (TxDOT Spec)	LF	280
666	PAVEMENT SEALER 24" (TxDOT Spec)	LF	30
672	REFL PAV MRKR TY I-C (TxDOT Spec)	EA	4
672	REFL PAV MRKR TY I-A (TxDOT Spec)	EA	20
852	Sanitary Sewer Manhole (0' - 6') 4' Dia	EA	1
852	Sanitary Sewer Manhole (Shallow) 4' Dia	EA	1
856	Carrier Pipe for Jack, Boring & Tunneling (8")	LF	52
856	Steel Casing (24")	LF	52
865	Bypass Pumping (Site 09)	EA	1
866	Sewer Main Pre-Television Inspection (8" - 15")	LF	52
866	Sewer Main Post-Television Inspection (All Sizes)	LF	52
SS 6001	Portable Changeable Message Sign (TxDOT Spec)	EA	2
100	Mobilization (Site 09)	LS	1
101	Preparation of Right-of-Way (Site 09)	LS	1

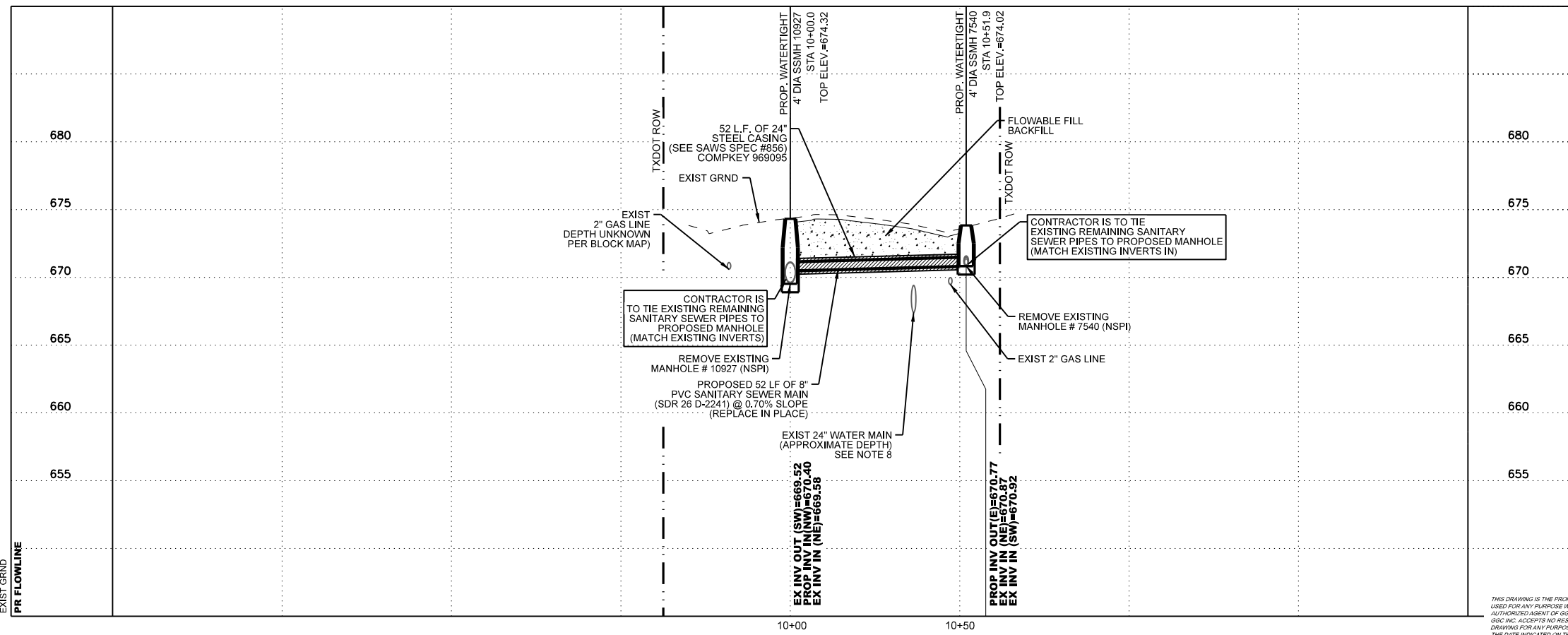
REV. No.	DATE	DESCRIPTION	BY
1	09-28-2022	ADDENDUM #1	A.H.

**SEWER LINE "SITE 09"
PROPOSED 8" MAIN (COMPKEY 969095)
STA 10+00 TO STA 10+52**



LEGEND

- EXISTING WATER METER
- EXISTING FIRE HYDRANT
- EXISTING POWER POLE
- EXISTING WATER VALVE
- EXISTING MAIL BOX
- EXISTING FLOW ARROW
- PROP WATER MAIN
- EXIST WATER MAIN
- PROP SANITARY SEWER
- EXIST SANITARY SEWER
- PROPOSED SEWER MANHOLE
- EXIST SEWER MANHOLE
- PROPOSED SEWER LATERAL AND CLEAN-OUT
- GAS MAIN
- OVERHEAD ELECTRIC
- UNDERGROUND ELECTRIC
- UNDERGROUND TELEPHONE
- PROPOSED FLOW ARROWS
- TREE
- SIGN
- GUY ANCHOR
- BENCHMARK
- CONTROL POINT
- FLOWABLE/CONCRETE
- STEEL CASING
- CAUTION GAS CROSSING
- MILL & OVERLAY
- 100 YR FLOOD ZONE



THIS DRAWING IS THE PROPERTY OF GGC, INC. AND SHALL NOT BE USED FOR ANY PURPOSE WITHOUT THE WRITTEN CONSENT OF AN AUTHORIZED AGENT OF GGC, INC. GGC, INC. ACCEPTS NO RESPONSIBILITY FOR THE USE OF THIS DRAWING FOR ANY PURPOSE AFTER SIX MONTHS FROM THE DATE INDICATED ON THE DRAWING. ALL RIGHTS RESERVED. COPYRIGHT 2021, GGC, INC.

GGC Engineers, Inc.
11215 Morning Court
San Antonio, Texas 78213
Ph. (210) 495-4745 Fax (210) 495-4746
TBPE Reg. No. F-1184

BAIN MEDINA BAIN, INC.
ENGINEERS & SURVEYORS
7073 San Pedro, San Antonio, Texas, 78216
Phone: 210-494-7223 Fax: 210-490-5120 WWW.BMBI.COM

2020 CMOM PACKAGE 2B
**PLAN & PROFILE
8" SANITARY SEWER MAIN
(SITE 09)**

DEVELOPER: _____
CONT. BUDGET PROJ.
SUBMITTED: _____
APPROVED: _____

MAP No. _____ SHEET 8 OF 64
SECT. No. _____ 100% SUBMITTAL
DR. MO CK. MM/AH JOB No. 21-4511